



Korea
Optical Company 
Directory Book



CONTENTS

1. FANTOM OPTICAL – PLUME P.3
2. GLASS OPPA MARTIN – TamTam P.4
3. JCS International – CLROTTE P.5
4. Optician Charlie People – Gyeongseong P.6
5. LIFE Glasses., Ltd – GEEKTA P.7
6. DUNUN Co.,Ltd. – Dr.GRAM P.8
7. EYE TOPIC OPTICAL – OLSO NORDIC P.9
8. I.SAM Optik – Satsuki P.10
9. MASKA Co.,LTD – MASKA P.11
10. JS EYEWEAR – M.TATE P.12
11. Highnoon Optical – ABBA P.13
12. Hube Eyewear – WEWE P.14
13. Philon Eyewear – Bartoli P.15
14. YELLOW BEE EYEWEAR – Yellowbee P.16
15. MARCH Eyewear – March P.17
16. VIAGEA – Viamof P.18
17. VERDI eyewear – KARRA P.19
18. SET Incorporation – MIKADO P.20
19. DR International – D'SOPORE P.21
20. TRUTH Eyewear – TRUTH Eyewear P.22

FANTOM OPTICAL

PEOPLE LUV ME, PLUME

Feel better every day with **PLUME** eyewear that stand out and attract attention. **PLUME** emphasizes reasonable prices and Korean-style design. It boasts top quality by incorporating new technologies. Plume is pioneering a new market for K-EYEWEAR. The **PLUME** brand is exported to over 10 countries worldwide, growing into a global brand.

*Brands: **PLUME / FRANK CUSTOM / IRONIC ICONIC / CRISPIN**

Products Details

PLUME



LIGHT FEATHERY EYEWEAR PLUME

PLUME, which adheres to the principle that eyewear, an integral part of everyday life, should be lightweight and comfortable, pursues a feather-like lightness.

Developing various designs using premium materials such as Ultem, TR90, stainless steel, and titanium, **PLUME** aims to communicate with the world through eyewear as a second face.

Daily, Lively

Wishing you, who spends each day with **PLUME** eyewear, to bring preciousness and confidence to your daily life and to create a more vibrant life.

Comfortable fit / Feather-like lightness / Excellent durability



GLASS OPPA MARTIN

Differential Value Products.

Glass Oppa specializes in Quality Control Management, New Technology Ideas, Trendy designs for timely sales, and offers specialized services for Optical Chain Stores. Glass OPPA MARTIN collaborates with eyeglasses chain stores and various ready-stock factories to provide services to sell the latest design products in a season

*Brands: TamTam

Products Details

TamTam - Frames

Eyewear planning & production in Korea

Minimalistic but not Boring design

Ready Stock available with Low MOQ

Planning and production of eyeglass frames for clients (in Korea, Italy, China).



ES-6007(51)



ES-1128(45)



T23019K(52)



T23013K(49)



T23015K(52)



T23011K(56)



T23020K(53)



T23012K(52)



T23009K(56)



T23014K(50)

JCS International

Shaping a creative & balanced future with customers and company members.

JCS studies the customer's face, concentrate on weight to minimize fatigue, change design and sketch again several times to find a comfortable fit.

JCS promise to concentrate on making products essential for daily life of our valuable customers by offering the best prices to each customer with the best materials and innovative methods.

*Brands: CLROTTE

Products Details

CLROTTE JASPER



COMFORTABLE EVERYDAY, CLROTTE

When you lose concentration and you want to take a rest, CLROTTE wants you to feel comfortable even not to notice that there are glasses on your nose.

The nose pads, made using the Metal Injection Molding (MIM) technique commonly used in watch part manufacturing, provide a comfortable and customizable fit, while Cloveman's unique Airco pads reduce nose pressure even during long wear.

Its classic horn-rimmed design, crafted from highly elastic eco-friendly materials, offers excellent durability and comfort.

CLROTTE doesn't want you to be bothered by glasses.

We just hope to be by your side without bothering you like friends who are comfortable when it is silent.



Optician Charlie People

Life is only interesting at the edge.

Optician Charlie was designed with passion and your needs in mind. Therefore we are ready to serve your needs now and in the future. Also we can best help you to choose a pair of glasses and sunglasses that best suits your personality and character.

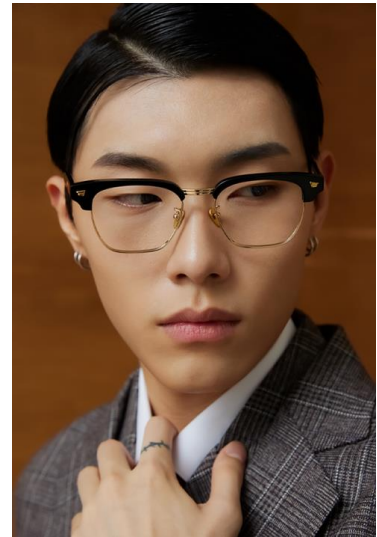
*Brands: Gyeongseong(京城)

Products Details

Gyeongseong(京城) Eoje

"Eoje" in Kyungseong recreates products imbued with the spirit of events, figures, and places that have left their mark on Korean history.

Through "Yesterday in Kyungseong," we remember and preserve our history, presenting a model for Korea's globalization that inherits historical aesthetics and philosophical significance.



Gyeongseong(京城) Oneul

"Oneul" in Kyungseong is a brand that seeks out Korea's unique retro vibe against the backdrop of its history, culture, and people.

Today in Kyungseong shares our historical experiences and contributes to the advancement of life.

By sharing our beautiful and nostalgic memories, we present emotional and transformative models.



LIFE Glasses., Ltd

Glasses that I always want to be with a valuable brand together.

LIFE Glasses., Ltd is a brand that goes beyond the basic functionality of eyewear, constantly exploring innovative designs that offer new utility. Launched in 2019, we are actively entering the market with a focus on B2C sales. Currently, we attract sales channels through our official website and over 20 online editorial shops.

*Brands: GEEKTA

Products Details

GEEKTA



Geekta is an eyewear brand which communicates by its own creative design and pursues the life style of diverse young directors with an idea like a geek.

Geekta eyewear expresses the identity of the person who wears the glasses as it is on the glasses. Geekta eyewear focuses on entirely new designs and sensibilities that allow you to express yourself more specifically.

Designed and designed by Geekta Eyewear, it is a handmade signature collection made with the finest premium acetate and metal from Machu Kelli, Italy.

It creates a harmonious look of vintage and modernity.

Our vision is to be with everyone.



DUNUN Co.,Ltd.

DUNUN Co.,Ltd. was established in 2016.

We possess various certifications required for exports.

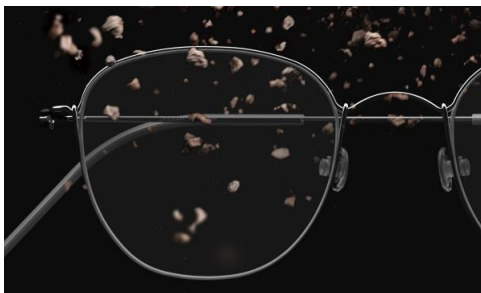
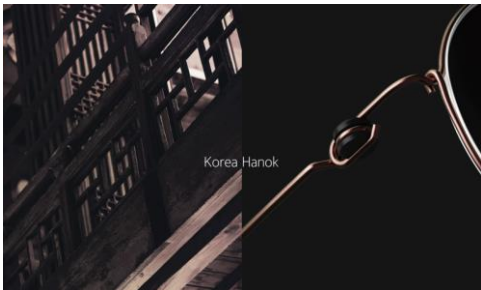
We have been honored with two prestigious global design awards.

We maintain a list of 60 Thai buyers, including distributors and eyewear retailers, who distribute products from competing companies.

*Brands: Dr.GRAM

Products Details

FRAME – Dr.GRAM



Dr.GRAM's glasses weigh only three grams which is lighter than a piece of A4 printing paper. Along with it's lightness, they are flexible and comfortable.

The flexibility and comfort was obtained through the hinges, in a shape of warp and weft, which intersects each other up and down without utilizing screws or welding.

Dr.GRAM's glasses use titanium oxide films to apply various colors to any parts of the glasses and different parts can be assemble to form a customized eyewear.

The colors are applied to titanium using an electric current, without the use of a chemical dye, to generate an oxide film on the surface.

These oxide films, unlike typical color coating technology, help preserve density and sturdiness of the glasses structure, and has negligible impact on environment.

<p>YBS-0181 22C147 145 21C149 145</p> <p>Frame material : Beta-Titanium</p> <p>Frame color : <input type="checkbox"/> Black <input type="checkbox"/> Navy <input type="checkbox"/> Brown <input type="checkbox"/> Navy <input type="checkbox"/> Gold <input type="checkbox"/> Silver</p> <p>Softax color : <input type="checkbox"/> Black <input type="checkbox"/> Navy <input type="checkbox"/> Brown <input type="checkbox"/> White <input type="checkbox"/> Silver green</p>	<p>YNS-0181 21C148 145 20C150 145</p> <p>Frame material : Beta-Titanium</p> <p>Frame color : <input type="checkbox"/> Black <input type="checkbox"/> Navy <input type="checkbox"/> Brown <input type="checkbox"/> Navy <input type="checkbox"/> Gold <input type="checkbox"/> Silver</p> <p>Softax color : No</p>	<p>YN03-0181 21C146 145</p> <p>Frame material : Beta-Titanium</p> <p>Frame color : <input type="checkbox"/> Black <input type="checkbox"/> Navy <input type="checkbox"/> Brown <input type="checkbox"/> Green <input type="checkbox"/> Gold <input type="checkbox"/> Silver</p> <p>Softax color : <input type="checkbox"/> Black <input type="checkbox"/> Navy <input type="checkbox"/> Brown <input type="checkbox"/> White <input type="checkbox"/> Silver green</p>	<p>YNS-0181 22C147 145 21C149 145</p> <p>Frame material : Beta-Titanium</p> <p>Frame color : <input type="checkbox"/> Black <input type="checkbox"/> Navy <input type="checkbox"/> Brown <input type="checkbox"/> Navy <input type="checkbox"/> Gold <input type="checkbox"/> Silver</p> <p>Softax color : <input type="checkbox"/> Black <input type="checkbox"/> Navy <input type="checkbox"/> Brown <input type="checkbox"/> White <input type="checkbox"/> Silver green</p>
<p>YN03-0181 20C145</p> <p>Frame material : Beta-Titanium</p> <p>Frame color : <input type="checkbox"/> Black <input type="checkbox"/> Navy <input type="checkbox"/> Brown <input type="checkbox"/> Green <input type="checkbox"/> Gold <input type="checkbox"/> Silver</p> <p>Softax color : No</p>	<p>YDS01-0181 21C143 145</p> <p>Frame material : Beta-Titanium</p> <p>Frame color : <input type="checkbox"/> Black <input type="checkbox"/> Navy <input type="checkbox"/> Brown <input type="checkbox"/> Green <input type="checkbox"/> Gold <input type="checkbox"/> Silver</p> <p>Softax color : <input type="checkbox"/> Black <input type="checkbox"/> Navy <input type="checkbox"/> Brown <input type="checkbox"/> White <input type="checkbox"/> Silver green</p>	<p>YD01-0181 20C146 145</p> <p>Frame material : Beta-Titanium</p> <p>Frame color : <input type="checkbox"/> Black <input type="checkbox"/> Navy <input type="checkbox"/> Brown <input type="checkbox"/> Green <input type="checkbox"/> Gold <input type="checkbox"/> Silver</p> <p>Softax color : No</p>	<p>YD-0181 22C145 145</p> <p>Frame material : Beta-Titanium</p> <p>Frame color : <input type="checkbox"/> Black <input type="checkbox"/> Navy <input type="checkbox"/> Brown <input type="checkbox"/> Navy <input type="checkbox"/> Gold <input type="checkbox"/> Silver</p> <p>Softax color : <input type="checkbox"/> Black <input type="checkbox"/> Navy <input type="checkbox"/> Brown <input type="checkbox"/> White <input type="checkbox"/> Silver green</p>
<p>YD01-0181 21C145 145</p> <p>Frame material : Beta-Titanium</p> <p>Frame color : <input type="checkbox"/> Black <input type="checkbox"/> Navy <input type="checkbox"/> Brown <input type="checkbox"/> Green <input type="checkbox"/> Gold <input type="checkbox"/> Silver</p> <p>Softax color : <input type="checkbox"/> Black <input type="checkbox"/> Navy <input type="checkbox"/> Brown <input type="checkbox"/> White <input type="checkbox"/> Silver green</p>	<p>YDS01-0181 20C144 145</p> <p>Frame material : Beta-Titanium</p> <p>Frame color : <input type="checkbox"/> Black <input type="checkbox"/> Navy <input type="checkbox"/> Brown <input type="checkbox"/> Green <input type="checkbox"/> Gold <input type="checkbox"/> Silver</p> <p>Softax color : No</p>	<p>YN04-0181 20C145 145</p> <p>Frame material : Beta-Titanium</p> <p>Frame color : <input type="checkbox"/> Black <input type="checkbox"/> Navy <input type="checkbox"/> Brown <input type="checkbox"/> Green <input type="checkbox"/> Gold <input type="checkbox"/> Silver</p> <p>Softax color : No</p>	<p>YD-0181 21C146 145</p> <p>Frame material : Beta-Titanium</p> <p>Frame color : <input type="checkbox"/> Black <input type="checkbox"/> Navy <input type="checkbox"/> Brown <input type="checkbox"/> Navy <input type="checkbox"/> Gold <input type="checkbox"/> Silver</p> <p>Softax color : No</p>

EYE TOPIC OPTICAL

Have our own brand for local market.

EYE TOPIC OPTICAL was established in 2011.

We stand out by offering fashionable designs and vibrant colors, breaking away from the standard uniformity found in domestic eyewear, and exploring diverse markets.

*Brands: OLSO NORDIC

Products Details

OLSO NORDIC - Frame



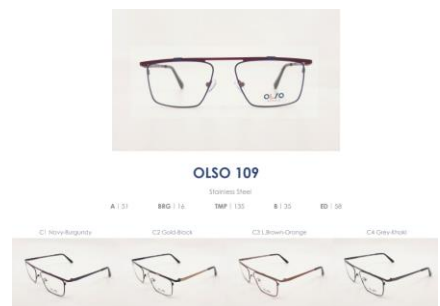
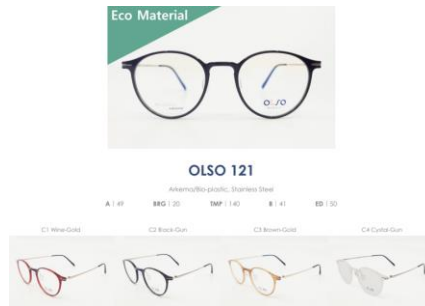
Sensitivity that comes from Northern Europe!

Eco-friendly cleanness & natural environment where we have a deep yearning to enjoy.

OLSO NORDIC designs eyewear with a Nordic concept, embodying the pure essence of the Nordic sensibility—cleanliness and natural hues derived from a toxin-free environment.

To share pure value through 'OLSO' with you!

We aim to showcase an eco-friendly image, comfort, and practicality, sharing values of purity and harmony with nature.



I.SAM Optik

Sophisticated design in order to pursue a design project

Established in 2006. ISAM Optik can approach buyers with confidence, relying on detailed websites and brand books to showcase trust and the excellence of our products.

We can continuously introduce our products to buyers through ongoing communication via Facebook and WhatsApp.

*Brands: Satsuki

Products Details

Satsuki-Titanium frame

- Material: Stainless Steel
- Weight: 8-13g
- Origin: South Korea



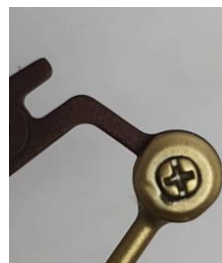
Satsuki-Ultem

- Material: Ultem
- Weight: 10-14g
- Origin: South Korea



Evoflex Edge

- Experience lightweight comfort and an intellectual, refined aura when wearing our glasses.
- This design epitomizes sophistication, eliminating screw warping to fulfill our design vision.
- Crafted with durability in mind, our product is utilized in professional settings such as golf clubs, glasses frames, and lightweight bicycles.
- The centrally positioned nose support ensures comfort and eliminates headaches, thanks to its silicone construction.
- Aesthetically pleasing, our product utilizes premium materials, including German Evoflex and eco-friendly German Velac coating.



MASKA Co.,LTD

Life Story of Dreamers

Since 2015, an optician has been pursuing a design philosophy that harmonizes extremes like past and present, East and West, aiming to create new basic eyewear as works of art. Collaborating with eyewear designers, they annually experiment and release new concept samples, selecting only 20% for production.

*Brands: MASKA

Products Details

BURT



The groundbreaking BURT eyewear, featuring a revolutionary multi-faceted eye design with lightweight, resilient beta-titanium frames.

A new eyewear solution that addresses the issues of heaviness and discomfort in wearing.

BURT remains a beloved staple product, continuing to receive immense love, and has become the flagship piece promoting MASKA.

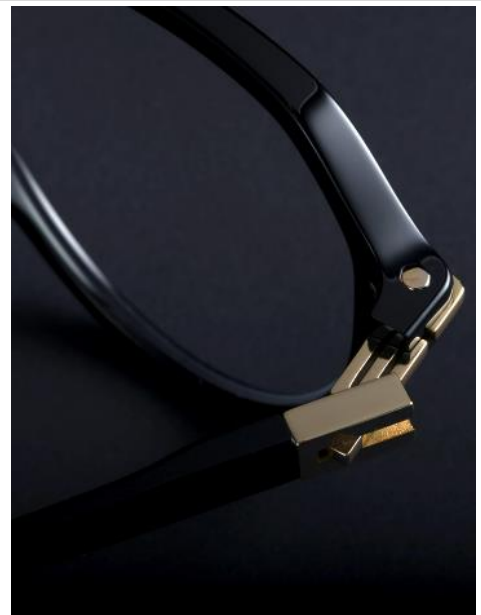


FREE

Patented premium 'Free hinge' design eyewear that solves issues of headaches and discomfort caused by temple pressure and alleviates the problem of heaviness.

The 'Free hinge,' developed to provide comfortable wear, is both sleek and resilient.

Its overall design exudes sophistication, seamlessly evolving into Mascara's new series.



JS EYEWEAR

Reasonable, Various, Professional

Design consulting through local corporation (China, Japan, Korea) around the world, production of its own brand OEM, and continuous solution provision with house brand companies are possible a manufacturing and distributing company

Professional eyewear total solution based on planning, design, production, and logistics

*Brands: M.TATE

Products Details

M.TATE



M of METAL, a brand with the meaning of TATE of ACETATE

Design: A product line that reflects trends with the main targets for people in their 20s to 40s, uni-sex product that does not distinguish between men and women

- - M.TATE-LUX crafted entirely from ALL titanium.
- - M.TATE-MTT featuring beta-titanium.
- - M.TATE-MTA utilizing acetate.
- - M.TATE-MT, our basic metal line.



Highnoon Optical

A relaxed gaze from me, A relaxed gaze on me.

Highnoon Optical products were exported all over the world and the quality of the products was proven.

Highnoon Optical has proven its quality by exporting to 30 countries overseas and domestically. At the Same time, the place where the transaction was made once continues to be transacted.

*Brands: ABBA / DANISH DESIGN / COPAIN

Products Details

ABBA

- We sell more than 200 products and produce products suitable for both men and women of all ages.
- It comes in a variety of designs and colors, making it easy to choose according to your taste.
- It has excellent price-performance, and is suitable for fashion items.
- Our brand consists of ABBA TR, TRLEX, METAL, CLASSIC, and TOP.

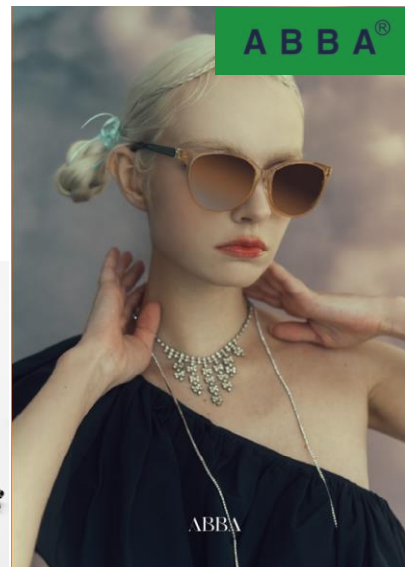
ABBA METAL 7028

Simple but intelligent and fashionable design.



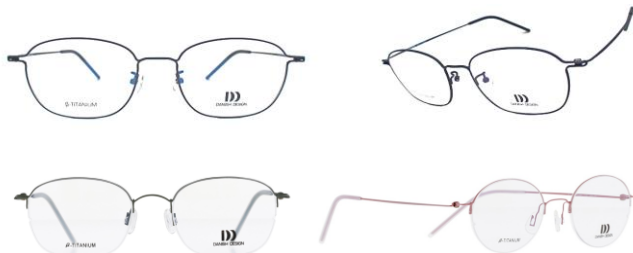
ABBA CLASSIC 3013

ABBA Eyewear's ambitious work has created a new level of design and ambitious creation of durable eyeglasses.



DANISH DESIGN

- DANISH DESIGN was launched in the second half of 2022, with beta titanium and half-rimless, full-frame type have been launched.
- Recent buyer's stated that Beat-titanium material and half-rimless/full-frame types would be good, and by reflecting these opinions we've released the new product.
- Repurchasing by customers are continuously ongoing, and the product's popularity is very high as you can see from that it has gone out of stock not long after the release.



COPAIN

- COPAIN products are metal products for children.
- Springs are inserted for greater flexibility.



Hube Eyewear

Draw Dreams

Established in 2012, Hube Eyewear pioneered the integration of double injection technology into eyeglasses in Korea.

We're not just a mere manufacturer; rather, we specialize in eyewear, offering comprehensive solutions by combining planning and design.

*Brands: WEWE / pla_sta

Products Details

WEWE

WEWE is a children's glasses frame brand that keeps children's eyes healthy so that they can freely express their dreams and hopes.

This is a cute glasses frame that gives you a cute and lively look by showing free curves and various color matching with the drawing line of "drawing a dream" as a motif.

By applying Plasta's design and technology, we have launched a new line of glasses that are comfortable and safe for children.



PLASTA

Our own brand, "PLASTA," started with the "PLASTA 90" brand and was launched in 2012 by incorporating double injection technology. The brand was expanded to include PLASTA human, PLASTA blend, and PLASTA nature, and has now been renewed to imply the PLASTA brand name. I did it.

Polyetherimide (PEI), a super engineering plastic material, is used as a base for eyewear.

By researching and developing unique designs and injection technologies, we produce products that are slim and have excellent elasticity, and provide light and comfortable glasses to consumers.



Philon Eyewear

Eyewear distribution leader who renews customers' tomorrow

The meaning of Philon is **PHILOSOPHY ON FASHION**, that is, Philon pursues the principles of great fashion.

Philon Co., Ltd. is a specialized eyewear distributor that discovers overseas eyewear brands and introduces them to the domestic market.

*Brands: Bartoli / Joogamoi / Monblue / Dun / Yves Cogan

Products Details

Bartoli



Starting with Austria's ANDY WOLF and French fashion brand DANIEL HECHTER in 2007,

Japan's DUN in 2010, France's YVES COGAN in 2012, and France's YVES COGAN in 2013. Japan's BARTOLI and Germany's BAJAZZO were launched in the Korean market in 2014, and Japan's MONBLUE and JOOGAMI were launched in the Korean market.

We currently handle glasses and sunglasses from BARTOLI, JOOGAMI, MONBLUE, DUN and YVES COGAN.

Philon Co., Ltd. will establish a new paradigm in the Korean eyewear distribution market by providing customers with stylish glasses and sunglasses with advanced sensibility and design.



Joogami

Retro collection for fashion enthusiasts
Joogami Joogami is a house brand specializing in eyewear that was created by reinterpreting past eyewear designs and combining modern materials and technology with the motto of modern retro.



Monblue

Monblue means Mono (monoblock) and blue (green spirit of challenge).
This is a state-of-the-art monoblock titanium eyewear brand launched by Japan's Samgong Optics, which has been manufacturing eyeglasses for over 90 years.



YELLOW BEE EYEWEAR

Third Party On Co., Ltd was found by KEN, former CEO of SNRD.

TAG Eyewear is a newly established sports eyewear brand and its campaign with three keywords – Passion, Evolution and technology.

It leads the sports field and develops products for players who has the strong challenges.

*Brands: Yellowbee

Products Details

OPTICAL [O/P - Optical Palstic, O/M - Optical Metal]

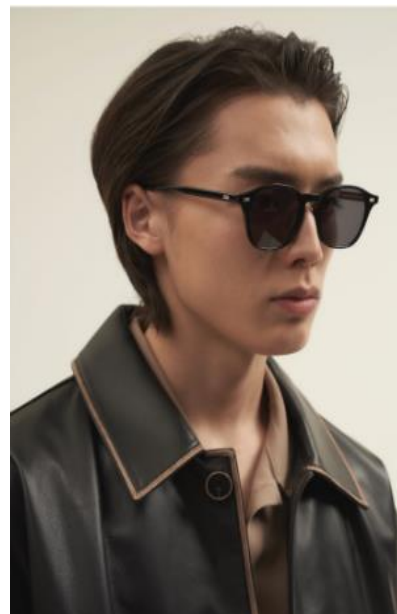
Yellowbee aims for the ultimate pure eyewear based on simple but subtly detailed and delicate designs that are not easily revealed.

We prioritize achieving the optimal balance that eyewear can have through precise and robust designs after selecting the perfect materials for each part of the models.

Adhering to the basics for comfortable wear for different face shapes and sizes, Yellowbee frames are adorned with beautiful colors and restrained designs.



SUNGLASSES [S/P – Sunglasses Plastic, S/M – Sunglasses Metal]



MARCH Eyewear

We consider the essence of eyewear and provide value in everyday life.
 We research new innovations in eyewear by adding sensibility to formal frames.
 This is a house brand that produces eyewear that can be worn by people of all ages. We are faithful to the basic frame performance and focus on the daily lives of users to tell stories while taking gender, age, fashion, etc. into consideration.

*Brands: March

Products Details

MARCH

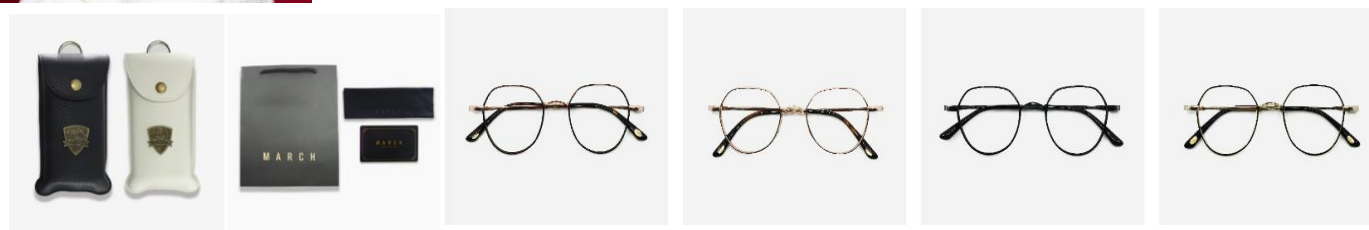


Personal Eyewear

This is a house brand that produces eyewear that can be worn by people of all ages. We are faithful to the basic frame performance and focus on the daily lives of users to tell stories while taking gender, age, fashion, etc. into consideration.

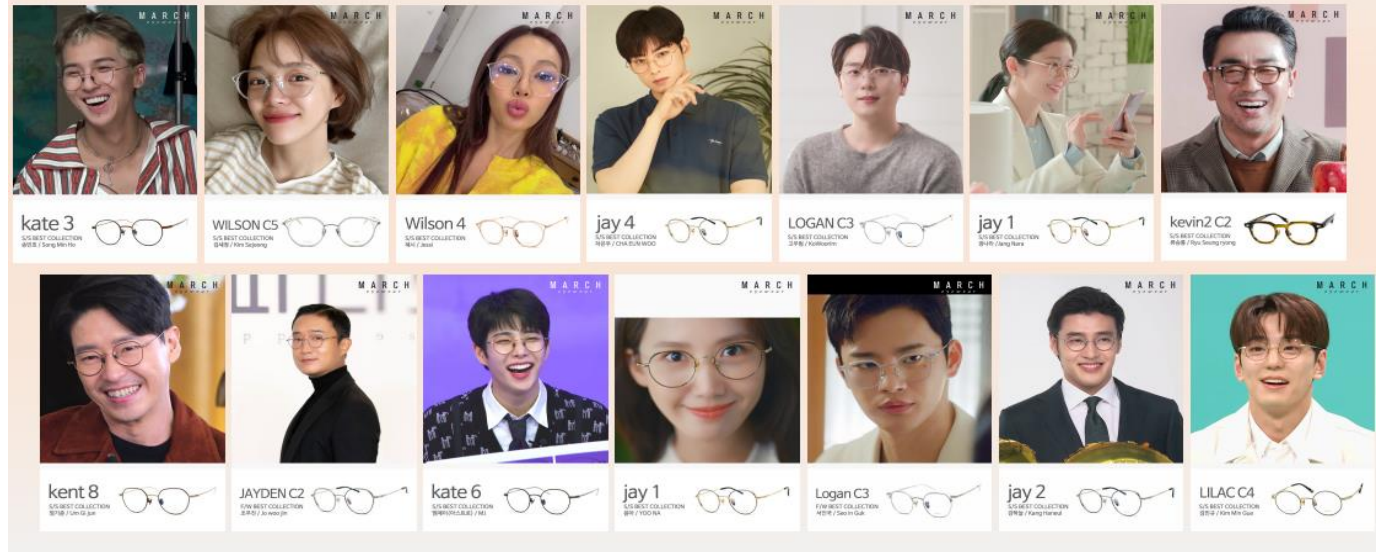
Impressive Experience

We pursue designs that can make an impact on our loose daily lives. In order to give an impressive identity to people's first impression, MARCH adds emotion to the frame under the motto Classic with a Twist, providing a colorful experience of daily life.



March eyewear

Pioneering overseas sales channels through K-pop celebrities.



VIAGEA

We take our time to make glasses of quality, not quantity.

VIA MOF takes the full lifecycle of the product into consideration, including its environmental impact, maintenance requirements, and potential for reuse and recycling.

We move beyond fashion to create all-around sustainable products. categories, starting with Germany's iF Design Award in 2022.

*Brands: Viamof

Products Details

Viamof



Discover the ultimate in comfort with our feather light 12g glasses. Even when added with MOF, it's crafted to be ultra-light-weight, not exceeding 25 grams.

Silicon nose pads with a thickness of 0.5mm and a minimum weight of 12g, our glasses are designed to prevent any marks on your nose even with all-day use.

Active Temple

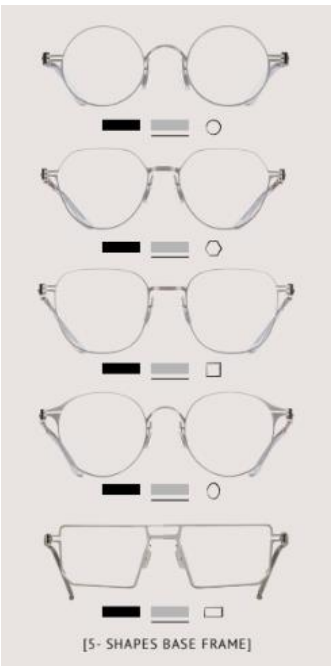
Perfect for the outdoors and working out (or for anyone who needs an extra grip)

Patented Screwless Hinge

Easily open and close without dealing with any screws

Via Venezia Garnirs(toppers)

Versatile add-ons to customize my looks



VERDI eyewear

Our products enabled us to establish strong and firm customer bases.

Since its founding in 2001, VERDI eyewear is an optical frame manufacturer with a team of experts who have been in the industry for over 2 decades.

The combination of trendy design, high quality, and reasonable price is the key value of VERDI eyewear optical frames that beloved by North and South America, the Middle East, Asia, etc.

*Brands: KARRA, MINIMUM, STYLE9

Products Details

KARRA ECO

Eco Plastic

KARRA ECO Plastic Series is made from Rilsan® Clear, an eco-friendly plastic material developed by ARKEMA, France.

Rilsan® Clear is made with 45% bio-based raw material (castor oil), and is known for its lightness, transparency, clarity, high chemical resistance, and stress cracking resistance.

Frame Design

The KARRA ECO Plastic Series features a lightweight G850 frame with an arnel style front.

Rivets enhance the vintage mood of the frames.

The colors are stably injected with self-gloss with no peeling issue.

Molded-in nose design for those who do not prefer nose pad marks!



Style 9

Kid's Glasses for their curious Eyes

Elevate your child's style with our Light TR-Based Kids' Frame featuring a cute TR front!

Experience the perfect blend of durability and fashion with our TR & TPE Double-Injected Temples, available in vibrant color combinations.

The TPE parts offer a soft and cozy surface texture with excellent elasticity, while the TR temple parts provide firmness for a secure and comfortable fit.

Metal, TR, Sunglasses



SET Incorporation

Traditional "German eyewear brand"

MIKADO is a traditional "German eyewear brand" and it has been 30 years over since 1983. This eyewear brand was made by Joachim Bischoff who is the originator of MIKADO and he had been developing creative designs & models during 30 years with the mind of philosophy ; "My designs & models are making my customers be joyful & comfort."

*Brands: MIKADO

Products Details

LTP/WT Series Collection (Stainless steel front / Titanium temples/ Plastic rim)

-Our company specializes in securing design products preferred by countries in the United States, Japan, and Southeast Asia.

-We have samples designed specifically to cater to the preferences of each country. Moving forward, there is a high potential for export during overseas buyer consultations.

-We are actively engaging in export consultations with buyers from Malaysia, Thailand, and Japan.

- MIKADO will succeed in penetrating the market with the quality and design demanded by buyers, along with assessing the eyewear trends in each export consultation country and formulating corresponding strategies to enter the market.



MT/ MTP Series Collection (Titanium front / temples)



DR International

Values & DEVELOPMENT

DR International is based on re-establishing the history and values of each company's brand and establishing a direction for improvement of the product.

DR International has collaborated with experts in various field for over 30 years to provide products that match the brand's dignity.

*Brands: D'SOPORE

Products Details

D'SOPORE



The development and revolution of glasses

We constantly study designs that provide satisfaction and comfort to our customers, and offer high-end designs and detailed products to convey our dignity.

Fine process and acceptance inspection

We collaborate with domestic and international masters to provide the best-conditioned products. Besides each process, we conduct three stages of acceptance inspection to provide the best products to our customers.



Trilateral cooperative manufacturing

We have signed agreements with companies from Korea, China and Japan to provide quality. Currently, it is expanding its overseas sales channels to China, Japan, France and Malaysia.

We are growing into a global company by producing products that meet the needs of non-Korean foreigners.



TRUTH Eyewear

Express unchanging values that can encompass past, present and future generation.

A modern classic vibe expressed in the way of Truth.

A lot of things around us are changing, but the classics are forever.

Each material used in eyewear is carefully selected and TRUTH Eyewear wants to re-evaluate and realized excellent function and perfect beauty.

*Brands: TRUTH Eyewear

Products Details

TRUTH Eyewear



NEW ITEM: PATENTED DESIGN DEVELOPMENT

Truss' newly designed and developed frame and legs are lightweight and durable,

We are not frustrated by failure and are leading the way in ceaseless challenge and development.

LIGHT AND FLEXIBLE MATERIAL

Truth has its own factory, injection production line.

We develop our own molds every season and produce frames with high quality.



TRUTH EYEWEAR ARCHIVES

Introducing Truth's new record.

Click to see more to see the video right now.

DAILY LIFE

'Truth' meets many people on the streets many country around the world, and were willing to join the 'truth' campaign.

